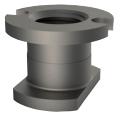
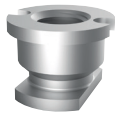


Cross Reference

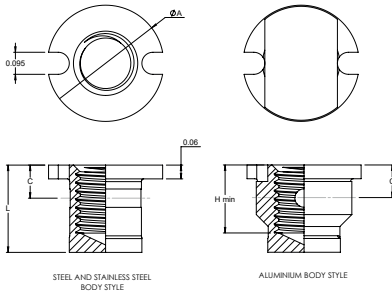
Clarendon Made	NAS Standards	SFS	The Young Engineers	Shur Lok
CM1836	NAS1836	EF1836	TYE2001	SL607

Type 1


Steel and Stainless Steel

Type 2


Aluminium



STEEL AND STAINLESS STEEL BODY STYLE

ALUMINIUM BODY STYLE

Table 1

Code	Thread	Ø A	C	H (min)	L (min)	Tab
06	.1380-32 UNJC - 3B	0.451	0.12	0.187	0.217	T2
08	.1640-32 UNJC - 3B					
3	.1900-32 UNJF - 3B	0.498	0.14	0.250	0.279	T4
4	.2500-28 UNJF - 3B					

Dimension in INCH

Table 2

Code	Material	Finish	Type
-	CARBON STEEL EN 10726	CADMIUM PLATE AMS-QQ-P-416, TYPE II, CLASS 2	Type 1
C	STAINLESS STEEL EN 1.4305	PASSIVATE PER AMS2700, METHOD 1, TYPE 2, CLASS 4	
A	ALUMINIUM 3.1354 T351	ANODISE PER MIL-A-8625 TYPE I, CLASS 1	Type 2

Table 3

Code	Special Finish (Stainless Steel Only)
P	CADMIUM PLATE AMS-QQ-P-416, TYPE II, CLASS 2
S	SILVER PLATE AMS2410

Table 4

Code	Solid Film Lubricant (Internal Threads Only)
M	MOLYKOTE PER AS5272, TYPE 1

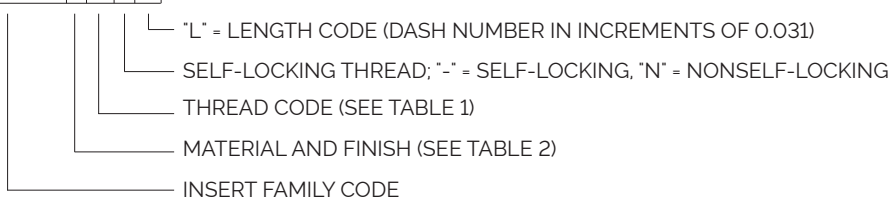
Table 5

Length Code	L	Length Code	L
07	0.217	16	0.496
08	0.248	17	0.527
09	0.279	18	0.558
10	0.310	19	0.589
11	0.341	20	0.620
12	0.372	21	0.651
13	0.403	22	0.682
14	0.434	23	0.713
15	0.465	24	0.744

Note: Inserts can be produced at any length, please contact the sales team for more information.

PART NUMBER CALL OUT

NAS1836

CM1836-3-8


PART NUMBER CALL OUT: CM1836-CARBON STEEL-CADMIUM PLATE-1900-32-SELF-LOCKING-.248"